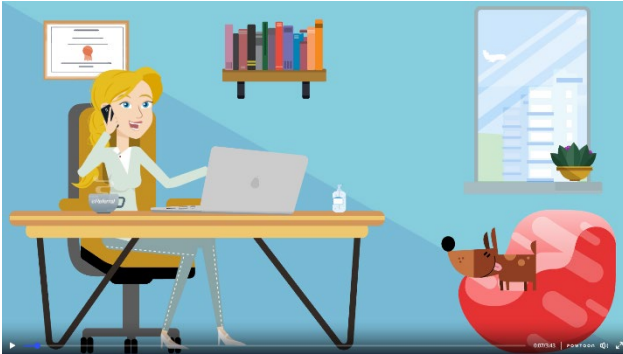


October 22, 2021

eReferral Enhancements Implemented



On October 21, 2021, we made a number of enhancements to make your use of eReferral more efficient. Many of these changes are behind-the-scenes that won't be noticeable, but some of them will be. To detail these enhancements, we have created a [video](#), but to summarize, users will notice the following changes:

- Users can add up to five files of five megabytes each for a total of 25 megabytes. This is helpful for specialties like Dermatology that need to see photos, or if you want to attach documents from your Electronic Medical Record (EMR).
- As a reminder, please go to the *Activity* section on your submitted Advice and Consult Requests and click on *View form for comments and attachments*. This ensures that you are seeing all notes, attachments or comments added.
- Referring providers may notice that the address section on the Consult Request standard form is updated to make it easier to use.
- Facility details, such as address, phone number, parking and directions are no longer available in the Health Services Catalogue (HSC). For AHS facilities, search for these details through www.ahs.ca. For other facilities, search online or call the facility for this information.

If you require any eReferral support, please review the Quick References on the [Alberta Netcare Learning Centre](#). For additional training support, please contact the eHealth Netcare Support Services team at 1-855-643-8649 or email ehhealthsupport@cqi.com. For more information about eReferral, visit our [website](#).



Reasons for Referral

For a current list of the Advice & Consult Request reasons for referral, go [online](#)



Training & Support

Need eReferral help? Contact eHealth Netcare Support Services at 1-855-643-8649 or email ehhealthsupport@cqi.com

For quick references, visit the [Alberta Netcare Learning Centre](#)



More Information

For more information about eReferral, visit us [online](#)



Get in Touch

For more information about eReferral, visit us [online](#)

For inquiries or questions, email access.ereferral@ahs.ca or call 1-888-733-3755 (M-F)